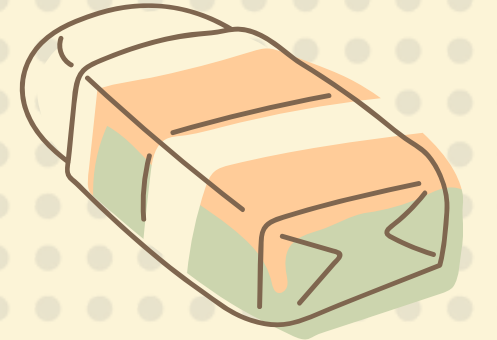
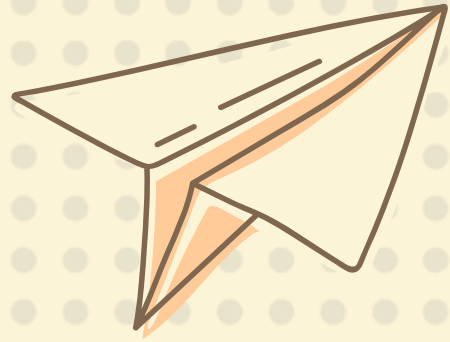


CLASS SYLLABUS

Ms. Chou





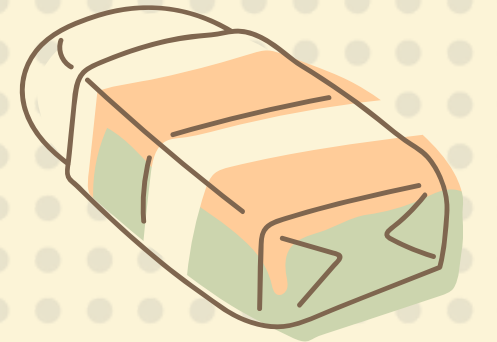
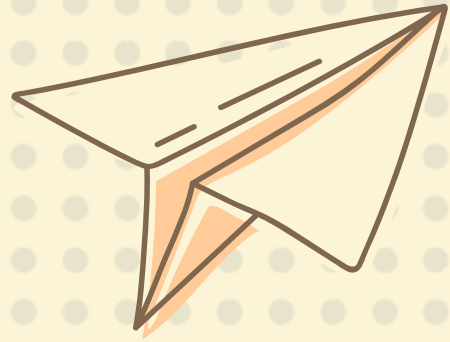
**WELCOME TO
SCIENCE!**



ABOUT ME!

- Ms. Chou - ("Chow")
- Pronouns: She/Hers
- Bachelor's in Science and Education
- Goal: To facilitate a safe, and fun environment for you to learn





Please create a Name plate for yourself
(fold into thirds so it can stand like a
triangular prism ie. Like a Toblerone!)

- Put your first name
- Pronouns
- and the phonetic pronunciation

eg. **Ms. Chou** ("Ch-ow") – **She/Her**



3 UNITS IN JUNIOR SCIENCE



BIOLOGY

CHEMISTRY

PHYSICS



5 UNITS IN EARTH SCIENCE 11



ASTRONOMY

**PLATE
TECTONICS**

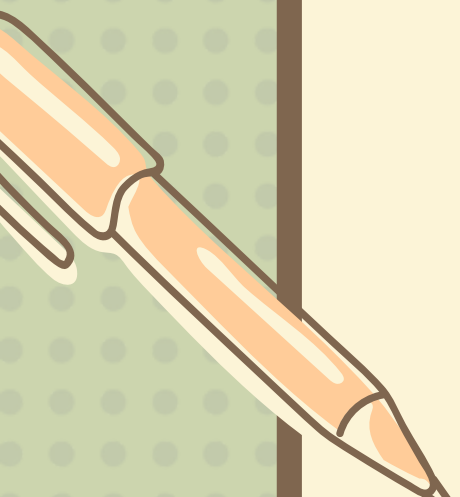
**WATER
SYSTEMS**

**EARTH'S
MATERIALS**

METEOROLOGY



REQUIREMENTS FOR CLASS



**PHONES OUT
OF SIGHT (IN
BAG OR
LOCKER)**

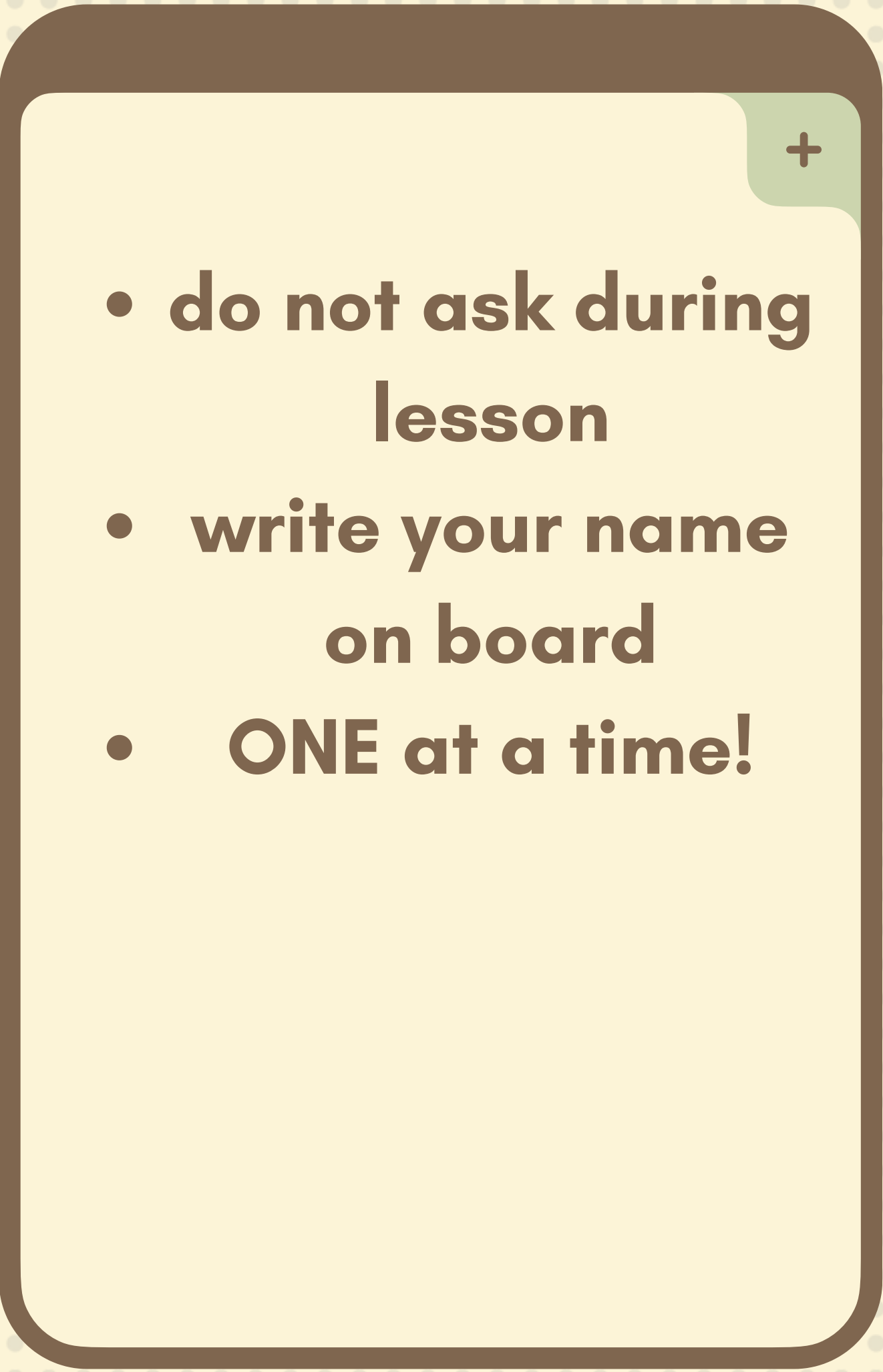
**IT WILL BE
CONFISCATED**

- **PENCIL**
- **ERASER**
- **RULER**
- **BINDER W/
PAPERS**
- **TEXTBOOK**
- **CALCULATOR**
- **PEN**

- **GOOD WORK
ETHIC**
- **RESPECTFUL
ATTITUDE**
- **OWNERSHIP**



WASHROOM POLICY

- 
- **do not ask during lesson**
 - **write your name on board**
 - **ONE at a time!**

HOW CLASS WORKS



1. **HOMework
STAMP + REVIEW**




2. **NEW LESSON
AND ACTIVITY**

3. **CLASSWORK
AND
REFLECTION**



EVALUATION






WRITTEN TESTS (45%)

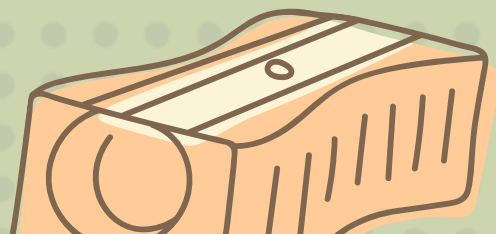
2X A UNIT





PROJECTS (30 %)
LABS (15%)

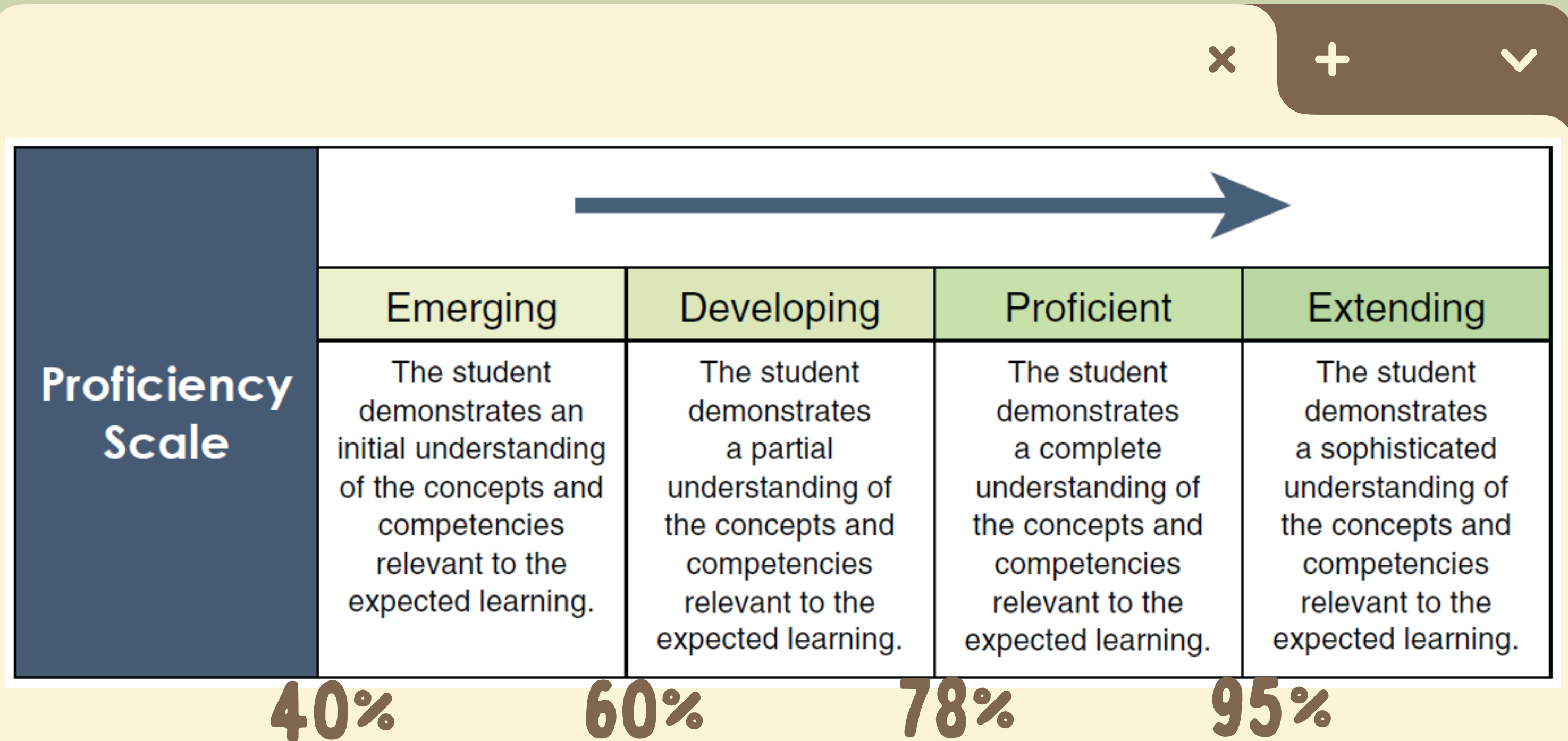
3X A UNIT



+ 10% HOMEWORK

+ 3% REFLECTION BONUS

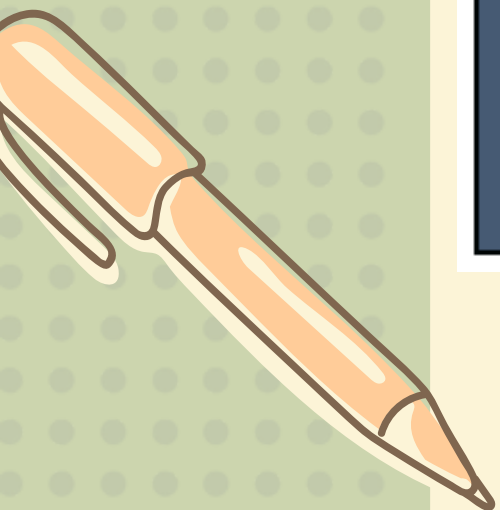
PROFICIENCY SCALE



Proficiency Scale	Emerging	Developing	Proficient	Extending
	The student demonstrates an initial understanding of the concepts and competencies relevant to the expected learning.	The student demonstrates a partial understanding of the concepts and competencies relevant to the expected learning.	The student demonstrates a complete understanding of the concepts and competencies relevant to the expected learning.	The student demonstrates a sophisticated understanding of the concepts and competencies relevant to the expected learning.

40% 60% 78% 95%

EVERY TEACHER IS DIFFERENT!!



EVALUATION FOR EARTH SCIENCE



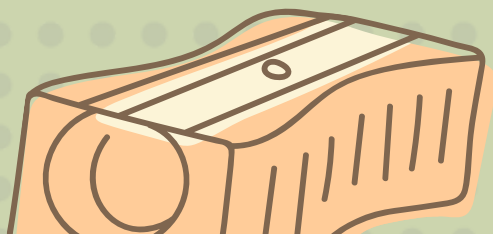
PROJECTS - (30%)

TESTS - (60%)




LABS - (10%)

**HOMEWORK -
(5% BONUS)**





LATE AND ABSENT POLICY

- 
- Parent must call office to get absence excused
 - You need to catch up! **MUST** come to tutorial the next morning
 - use MS teams to stay updated
 - late projects – must inform me beforehand

+

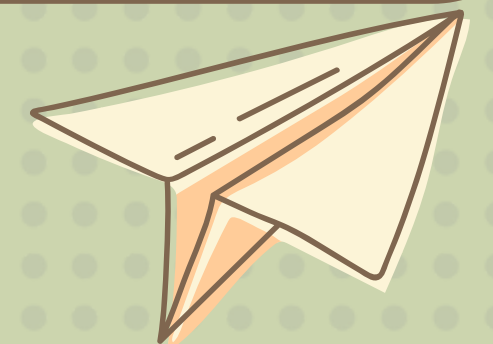
If you are having trouble with this class, come to me immediately and I can work with you.

If you wait till the end of the marking period, it will be **TOO LATE.**

BE HONEST WITH YOURSELF

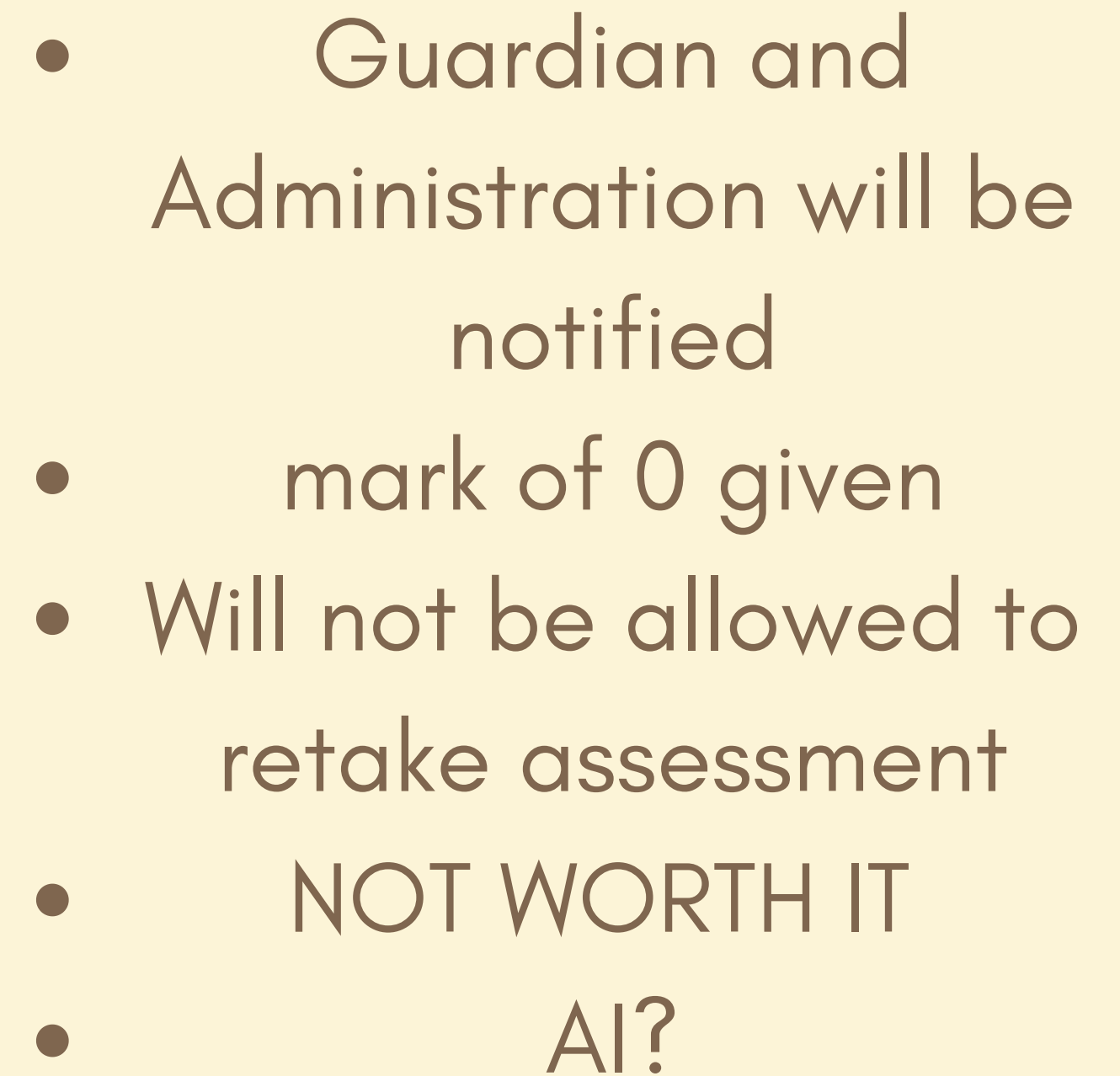
×

YOU ARE RESPONSIBLE FOR YOUR OWN LEARNING



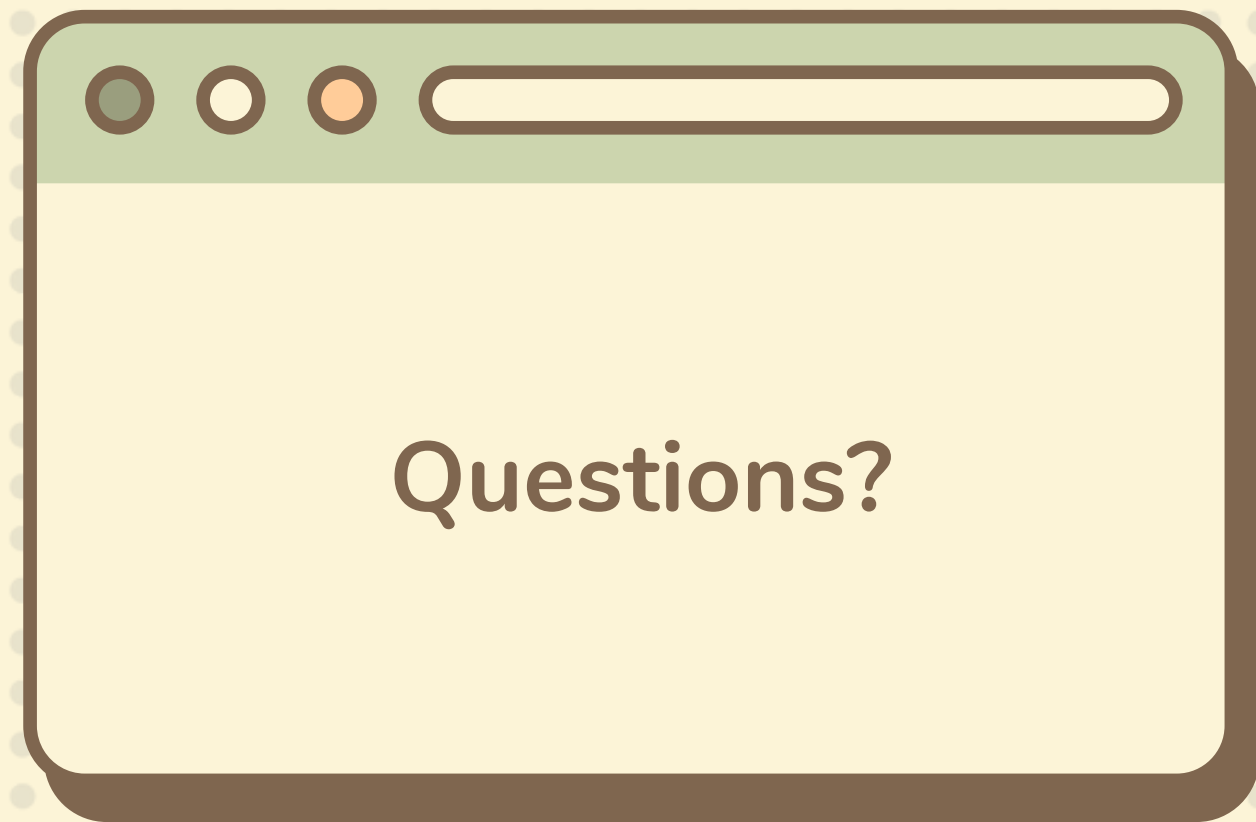


PLAGIARISM AND CHEATING

- 
- Guardian and Administration will be notified
 - mark of 0 given
 - Will not be allowed to retake assessment
 - NOT WORTH IT
 - AI?



**YOU CAN REACH ME ON
MS TEAMS, EMAIL OR IN
PERSON (ROOM 511)**



Questions?